

# Exhibits & Floor Plan



Introduction of dinosaurs from Tamba and display of well-preserved fossils.



Illustrations of global and local environmental issues.



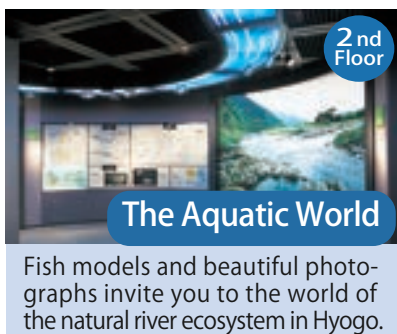
Typical secondary forest, artificial wetland and habitat. Enjoy lunch!



Diverse trees, mammals, insects and resinated Rafflesia flower obtained from Sabah, Malaysia.



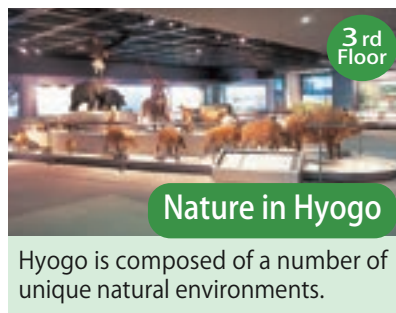
Multiple fossils reveal the succession of plants and animals over more than 3 billion years of earth history.



Fish models and beautiful photographs invite you to the world of the natural river ecosystem in Hyogo.



Temporary exhibitions are on display here two or three times a year.



Hyogo is composed of a number of unique natural environments.



Donated collections of insects, birds and plants, etc.



Lounge, reading room with hands on specimens and replicas.



Fossil preparation by researchers and assistants is on view.



- ▶ No umbrella or stick-like objects are allowed in the museum.
- ▶ Free coin lockers are available for belongings.
- ▶ No food or drink is allowed except in the lounge on the 4th floor (for food and drinks) and the blue carpet areas on each floor (for drinks).
- ▶ Re-entry is permitted with the admission stub for the day of issue.