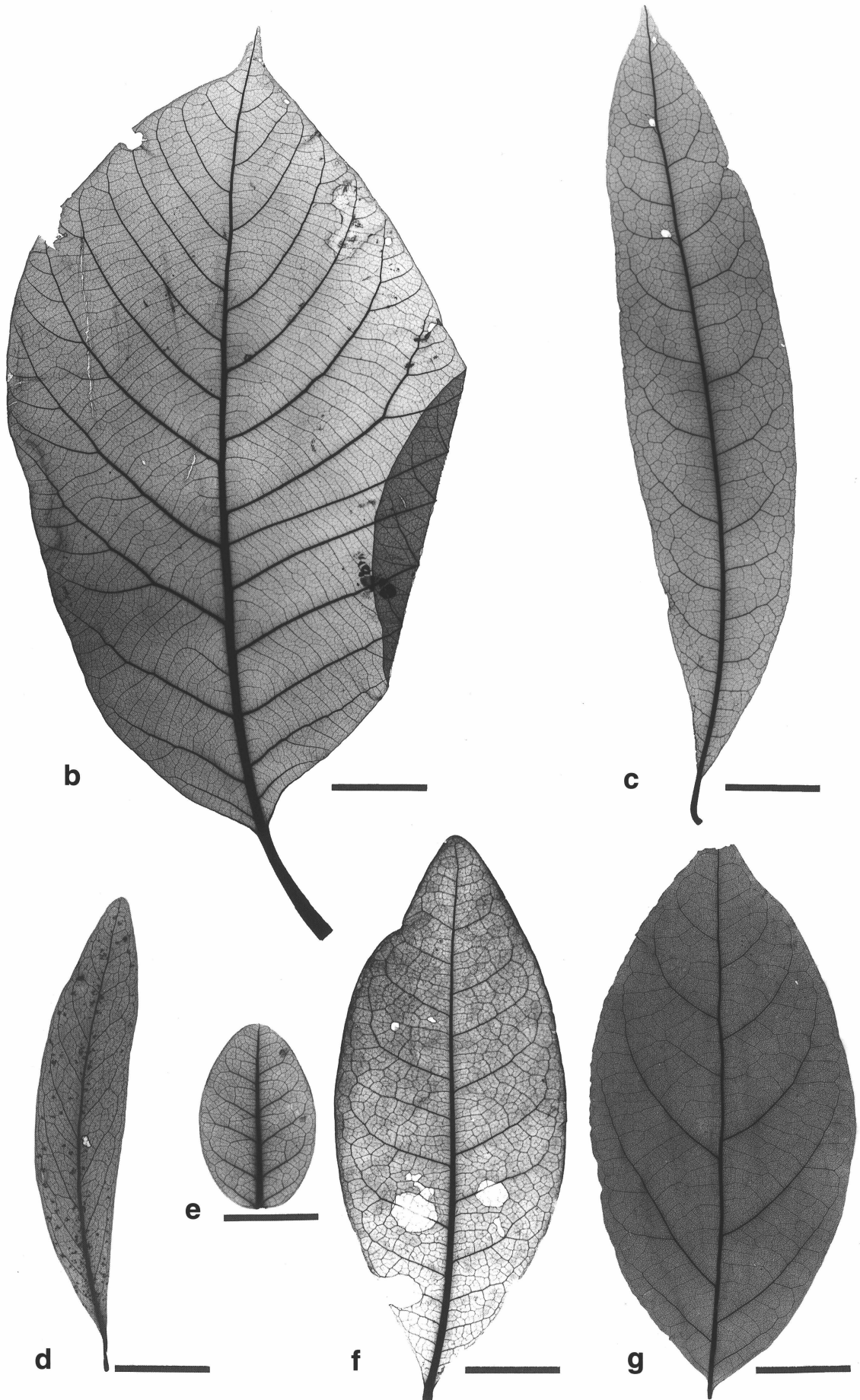
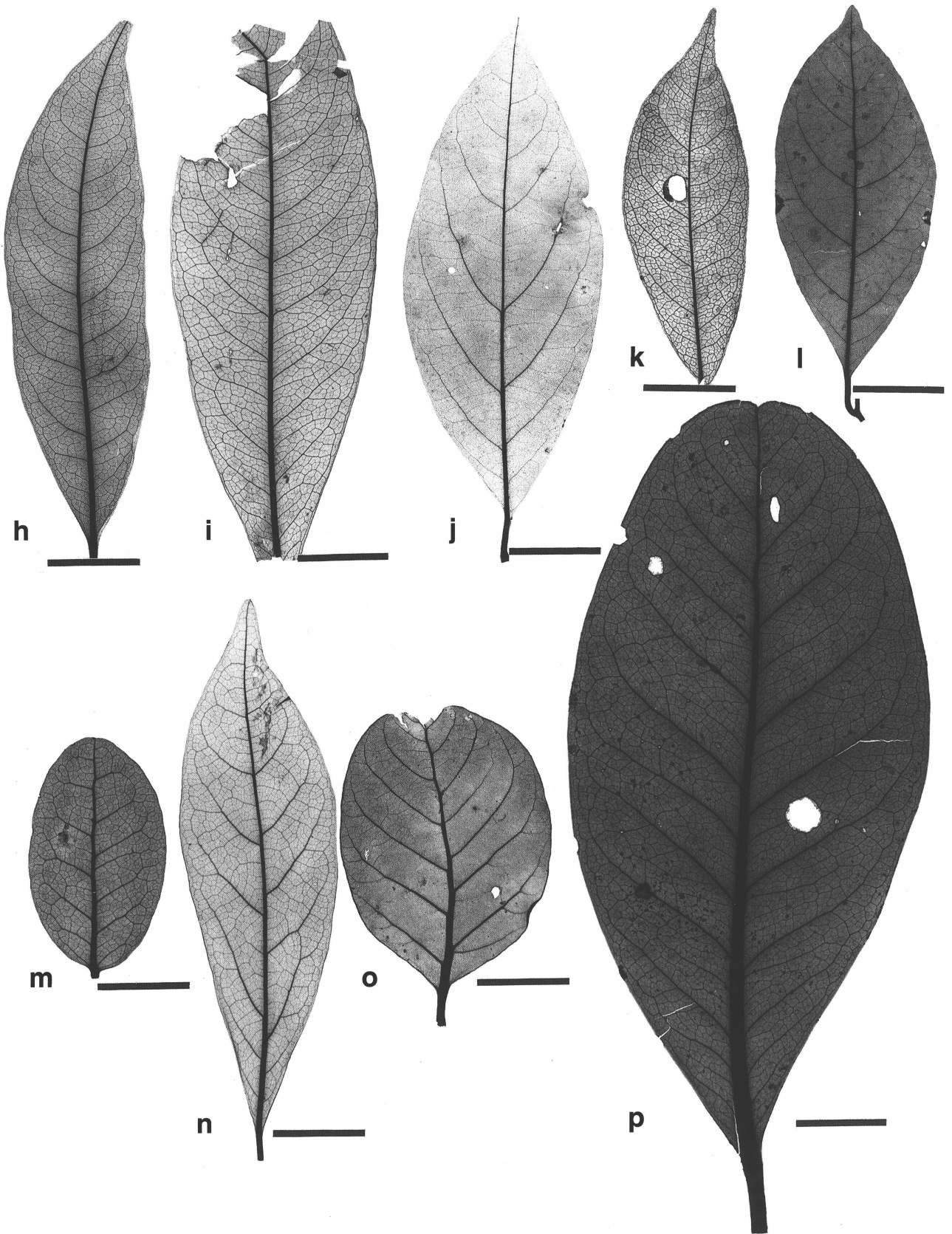




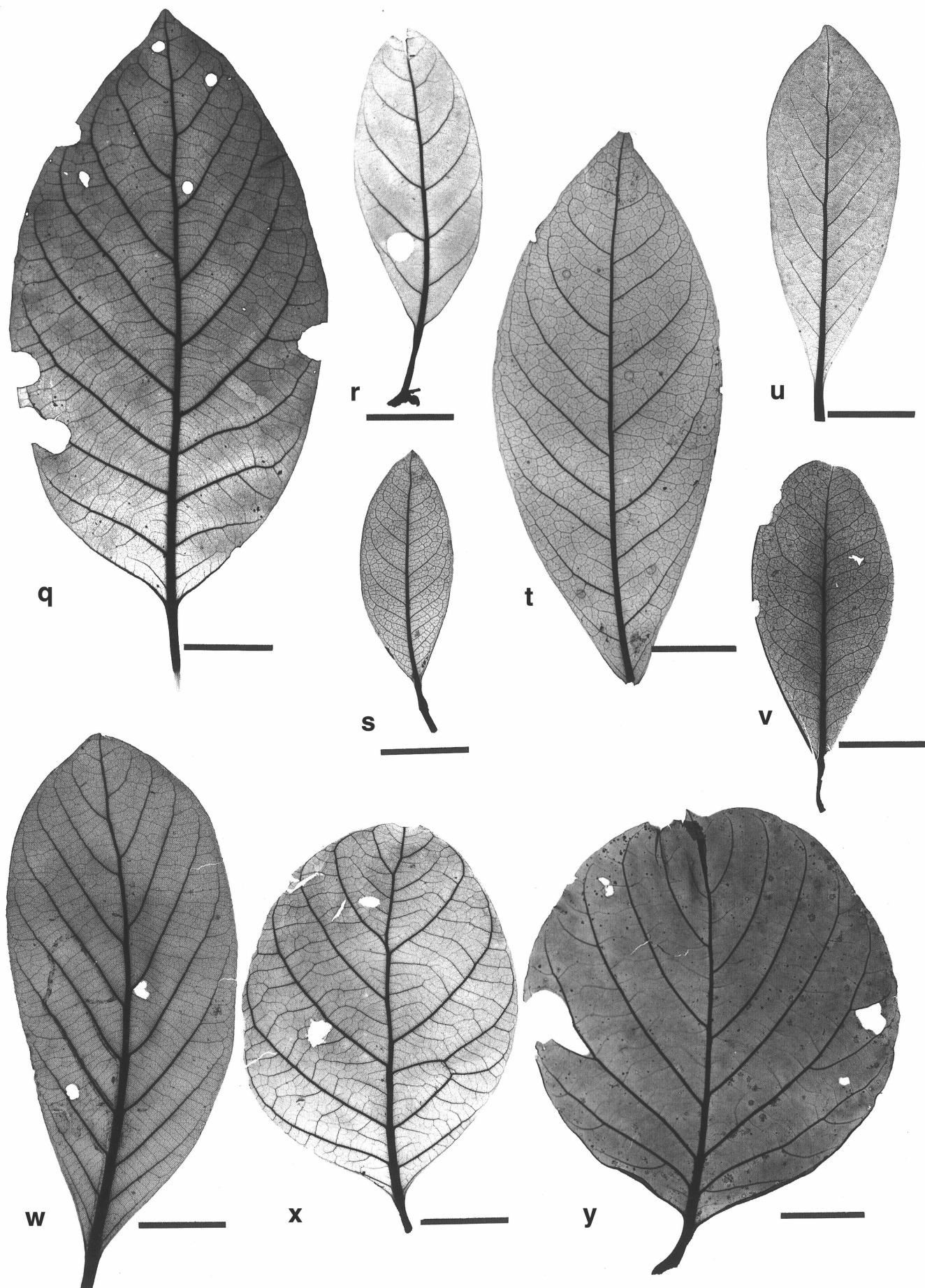
**Plate 1-1.** Venation patterns of neotropical *Beilschmiedia* species. a. *B. alloiophylla* (Clark 850). Scale bars equal 2 cm.



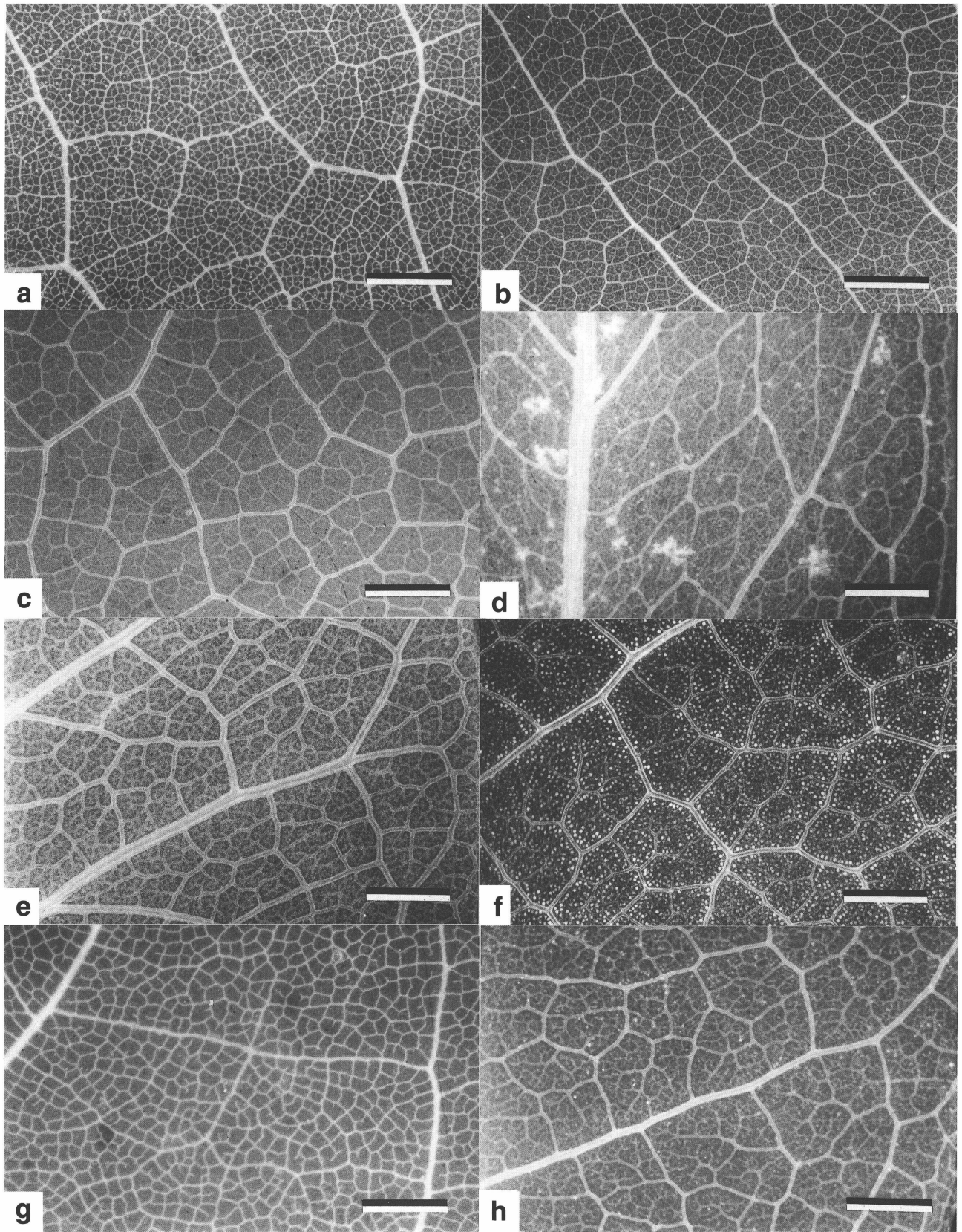
**Plate 1-2.** Venation patterns of neotropical *Beilschmiedia* species (continued). b. *B. anay* (Popenoe 754). c. *B. angustieliptica* (Lorea 5540). d. *B. angustifolia* (Constantis 19914). e. *B. berteriana* (anonymous). f. *B. brenesii* (Guindon 35). g. *B. costaricensis* (Bello 4882). Scale bars equal 2 cm.



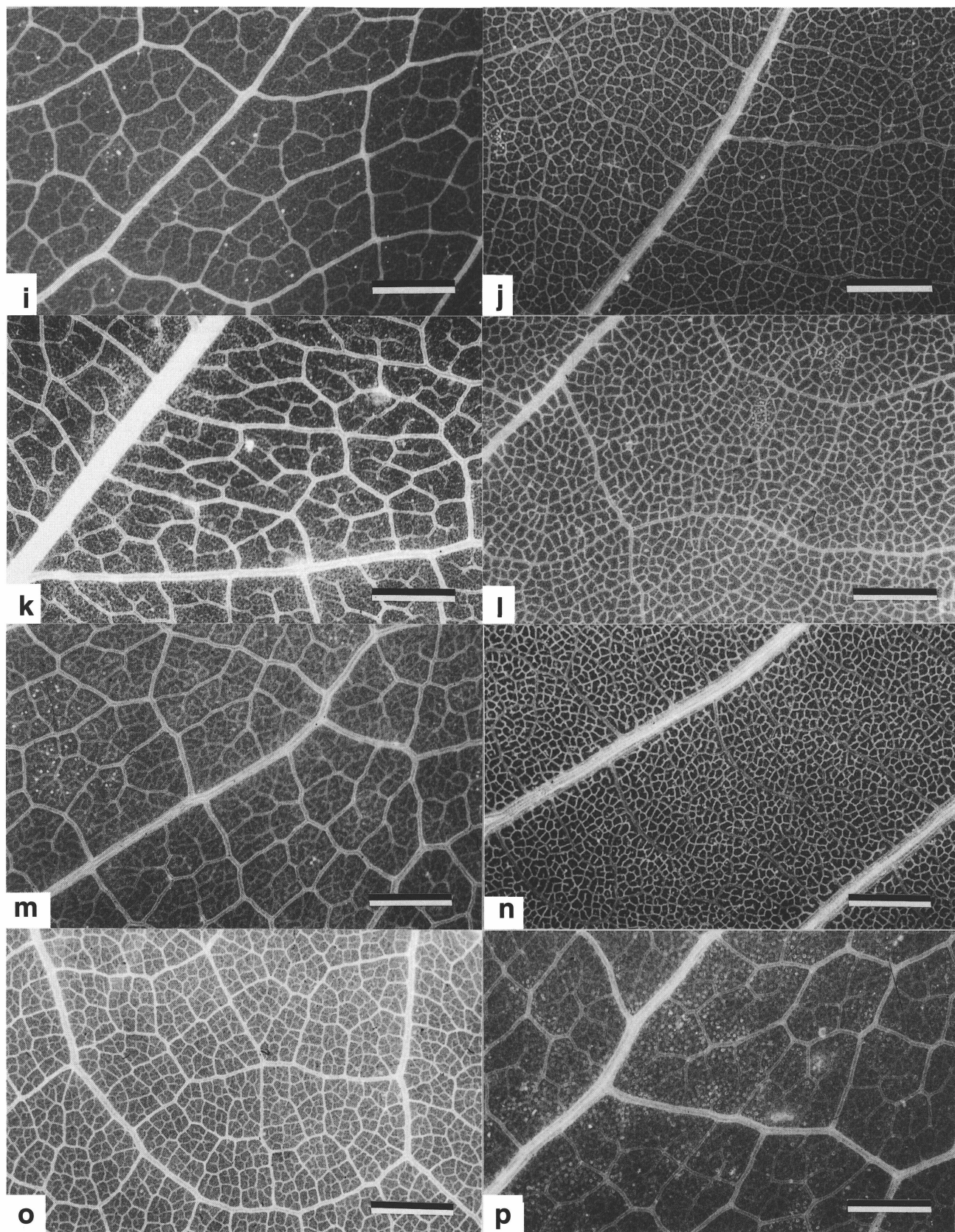
**Plate 1-3.** Venation patterns of neotropical *Beilschmiedia* species (continued). h. *B. curviramea* (Tutin 114). i. *B. fluminensis* (Brade 18642). j. *B. hexanthera* (van der Werff 12951). k. *B. hondurensis* (Gentle 7292). l. *B. mexicana* (Rubio 2209). m. *B. miersii* (Zöllner 18999). n. *B. ovalis* (Sytsma 2148). o. *B. pendula* (Gonzales 173). p. *B. rigida* (Glaziou 19790). Scale bars equal 2 cm.



**Plate 1-4.** Venation patterns of neotropical *Beilschmiedia* species (continued). q. *B. riparia* (Lorea 5498). r. *B. steyermarkii* (Contreras 9448). s. *B. stricta* (Nunes 313). t. *B. taubertiana* (Araujo s.n.). u. *B.* sp. 1 (Haber 11070). v. *B.* sp. 2 (Forias 243). w. *B.* sp. 4 (Guindon 40). x. *Hufelandia latifolia* (Tanner 709). y. *H. towarensis* (van der Werff 10584). Scale bars equal 2 cm.



**Plate 2-1.** Venation patterns (closed up) of neotropical *Beilschmiedia* species. a. *B. alloiophylla* (Clark 850). b. *B. anay* (Popenoe 754). c. *B. angustillobata* (Lorea 5540). d. *B. angustifolia* (Constantis 19914). e. *B. berteriana* (anonymous). f. *B. brenesii* (Guindon 35). g. *B. costaricensis* (Bello 4882). h. *B. curviramea* (Tutin 114). Scale bars equal 2 mm.



**Plate 2-2.** Venation patterns (closed up) of neotropical *Beilschmiedia* species (continued). i. *B. fluminensis* (Brade 18642). j. *B. hexanthera* (van der Werff 12951). k. *B. hondurensis* (Gentle 7292). l. *B. mexicana* (Rubio 2209). m. *B. miersii* (Zöllner 18999). n. *B. ovalis* (Sytsma 2148). o. *B. pendula* (Gonzales 173). p. *B. rigida* (Glaziou 19790). Scale bars equal 2 mm.