

Plate 4-3. Abaxial cuticles of neotropical *Beilschmiedia* species (continued). q. *B.* sp. 1 (*Haber 11070*). r. *B.* sp. 2 (*Folli 409*). s. *B.* sp. 3 (*Lorence 4376*). t. *B.* sp. 4 (*Chávez 443*). u. *Hufelandia latifolia* (*Steyermarkii 98386*). v. *H. towarensis* (*Díaz 3587*). Scale bars equal 50 μm .

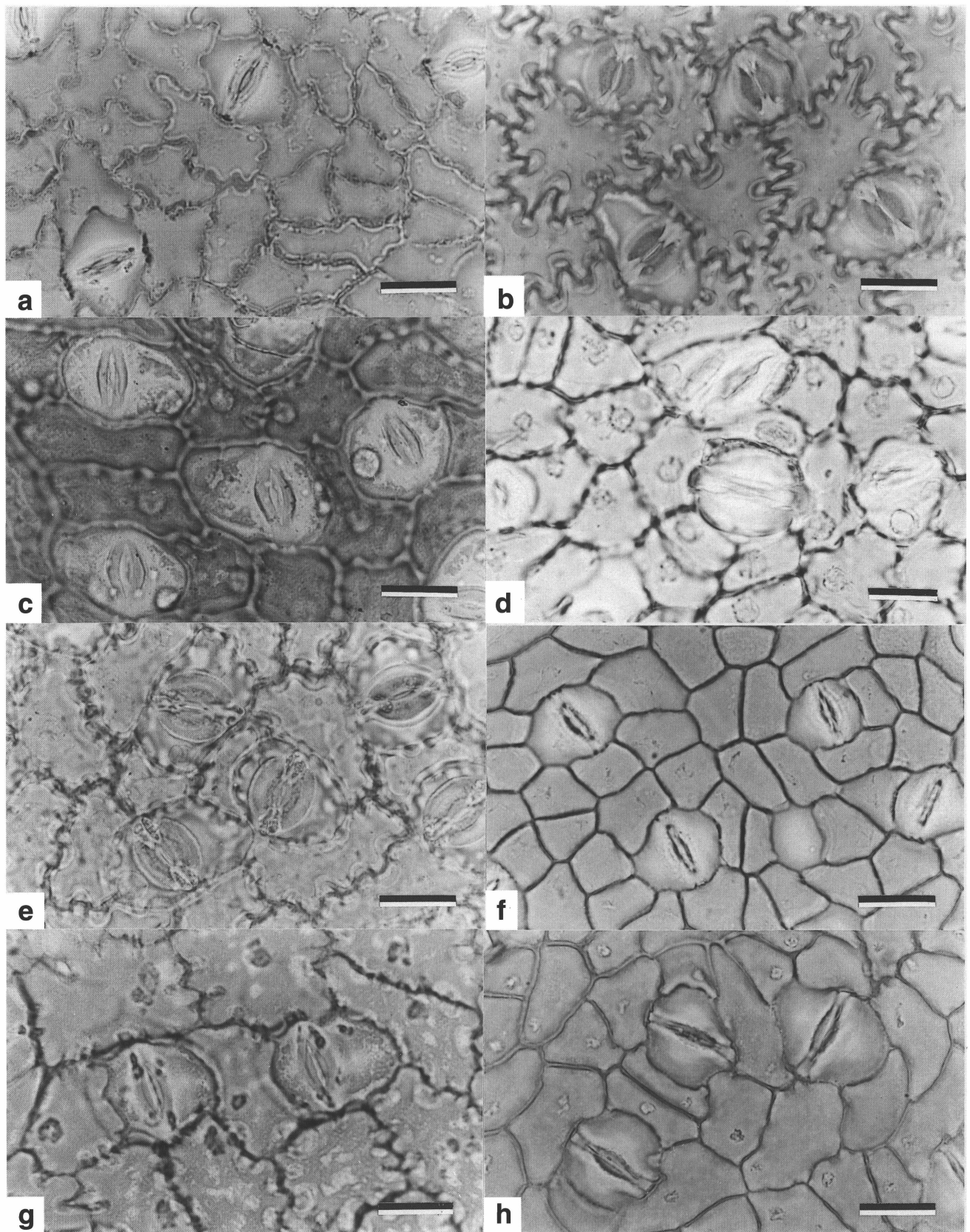


Plate 5-1. Stomata of neotropical *Beilschmiedia* species. a. *B. alloiophylla* (Clark 850). b. *B. angustieliptica* (Núñez 1159). c. *B. angustifolia* (Constantino 19914). d. *B. berteriana* (anonymous). e. *B. brenesii* (Bello 580). f. *B. costaricensis* (Lorea 5563). g. *B. curviramea* (Persaud 70). h. *B. hexanthera* (van der Werff 12951). Scale bars equal 20 μ m.

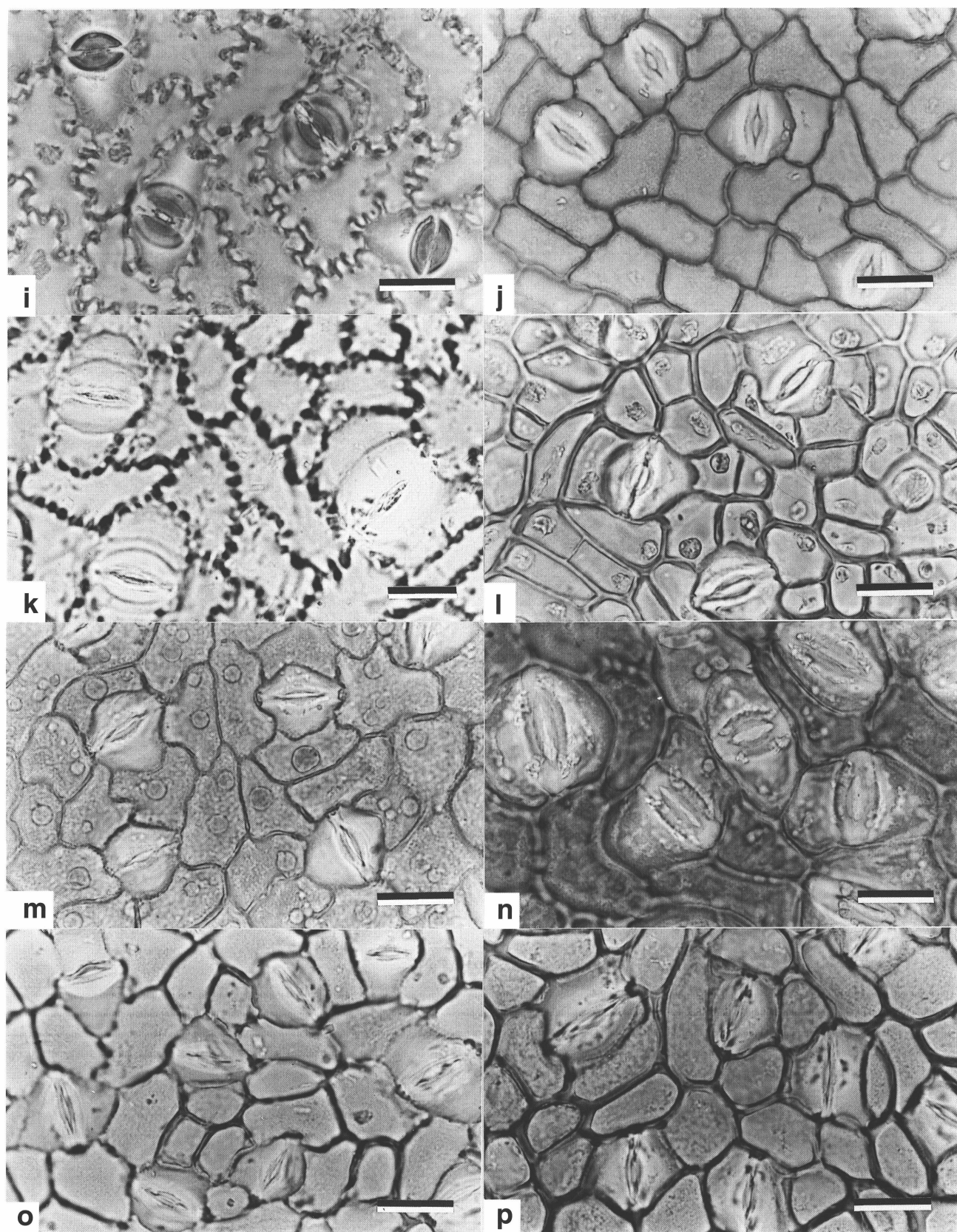


Plate 5-2. Stomata of neotropical *Beilschmiedia* species (continued). i. *B. hondurensis* (Lundel 19280). j. *B. mexicana* (Croat 65900). k. *B. miersii* (Taylor 10883). l. *B. ovalis* (Sytsma 2148). m. *B. pendula* (Herrera 5861). n. *B. rigida* (Martinelli 12889). o. *B. riparia* (Maya 1296). p. *B. steyermarkii* (Contreras 9448). Scale bars equal 20 μm .