
Report

Additions to the list of Tsuneki's type-specimens of Hymenoptera in the Museum of Nature and Human Activities, Hyogo

Yoshiaki HASHIMOTO and Akinori NAKANISHI

*Division of Phylogenetics, Institute of Natural and Environmental Sciences, Himeji Institute of Technology/
Museum of Nature and Human Activities, Hyogo, Yayoigaoka 6, Sanda, 669-1546 Japan*

Abstract

Additional eight holotypes and 27 paratypes of Hymenoptera described by K. Tsuneki were recently deposited in the collection of MNHAH, and are listed herein.

Key Words: Collection of Dr. Tsuneki, Type-specimens, Hymenoptera

Introduction

In March 1997, we published a list of 545 type-specimens of Hymenoptera originally described by the late Dr. K. Tsuneki and housed in the Museum of Nature and Human Activities, Hyogo (MNHAH) (Hashimoto and Nakanishi, 1997). In the present paper are listed additional 8 holotypes and 27 paratypes which were donated to our museum in September 1998 by Mr. Toshiaki Nambu, who is a very famous collector of wasps, ants and bees in Japan.

Arrangements of taxa and data follow those in the previous catalogue. The species within families are listed alphabetically, with a register-number in MNHAH collection, type-category, sex, locality, date, and reference to the original description. For each specimen the data are quoted directly from the label(s) beneath the specimen. The current status and combination of taxa are also noted, where they differ from the original ones.

Acknowledgements

We thank Mr. Toshiaki Nambu for his donating valuable Tsuneki's type-specimens to our museum, and Dr. Sk. Yamane for giving us useful information about the types.

List of Additional Type-Specimens of K. Tsuneki in MNHAH

- Sphecodes nambui* 1983 [B1-362303]
PARATYPE ♂. Kodama, Saitama Pref., Japan, 1970.7.18, T. Nambu leg. /Spec. Publ. Jpn. Hymen. Ass., No. 26 (1983): p. 13
- Sphecodes utinamius* 1983 [B1-362304]
PARATYPE ♂. Kodama, Saitama Pref., Japan, 1972.9.2, T. Nambu leg. /Spec. Publ. Jpn. Hymen. Ass., No. 26 (1983): p. 12
- Ampulex tridentata* 1982 [B1-362305]
PARATYPE ♀. Is. Iriomote, Okinawa Pref., Japan, 1978.8.23, T. Nambu leg. /Spec. Publ. Jpn. Hymen. Ass., No. 23 (1982): p. 16
- Crossocerus (Crossocerus) nambui* 1982 [B1-362306]
PARATYPE ♂. Yingfeng, Nantou Pref., Formosa, 1980.8.19, T. Nambu leg. /Spec. Publ. Jpn. Hymen. Ass., No. 23 (1982): p. 33
- Crossocerus (Paroxycrabo) rubromaculatus* 1982 [B1-362307]
PARATYPE ♂. Pempuchi, Nantou Pref., Formosa, 1980.8.21, T. Nambu leg. /Spec. Publ. Jpn. Hymen. Ass., No. 23 (1982): p. 30

Lestica (Solenius) rufigaster 1984 [B1-362309]

PARATYPE ♀. Hahadzima, Is. Ogasawaras, Tokyo, Japan, 1983.8.10, T. Nambu leg. /Spec. Publ. Jpn. Hymen. Ass., No. 28 (1984): p. 7

Liris (Leptolarra) subtessellatus ogasawarae 1984 [B1-362310]

PARATYPE ♂. Is. Ogasawara, Tokyo, Japan, 1983.8.11, T. Nambu leg. /Spec. Publ. Jpn. Hymen. Ass., No. 28 (1984): p. 3

Rhopalum succineicollarum 1952 [B1-362311]

ALLOTYPE ♂. Sapporo, Hokkaido, Japan, 1951.8.18, K. Tsuneki leg. /Jour. Fac. Sci. Hokkaido Univ., Ser. VI, Zool., Vol. 11 (1952): p. 120

Tachysphex nambui 1973 [B1-362312] (Fig. 1)

HOLOTYPE ♀. Is. Iriomote, Okinawa Pref., Japan, 1972.8.2, T. Nambu leg. /Etizenia, No. 65 (1973): p. 5

Tachysphex tinctipennis titidzimaensis 1984 [B1-362324]

PARATYPE ♂. Chichidzima, Is. Ogasawaras, Tokyo, Japan, 1983.8.9, T. Nambu leg. /Spec. Publ. Jpn. Hymen. Ass., No. 28 (1984): p. 4

Trypoxylon iriomotense 1981 [B1-362313]

HOLOTYPE ♀. Is. Iriomote, Okinawa Pref., Japan, 1978.8.24, T. Nambu leg. /Spec. Publ. Jpn. Hymen. Ass., No. 15 (1981): p. 22

Trypoxylon isigakiense 1973 [B1-362314] (Fig. 2)

HOLOTYPE ♀. Is. Ishigaki, Okinawa Pref., Japan, 1972.8.14, T. Nambu leg. /Etizenia, No. 65 (1973): p. 11

Trypoxylon tengmen 1981 [B1-362315]

HOLOTYPE ♂. Pempuchi, Nantou Pr., Formosa, 1980.8.21, T. Nambu leg. /Spec. Publ. Jpn. Hymen. Ass., No. 15 (1981): p. 27

Alysson monticola 1977 [B1-362316]

ALLOTYPE ♀. Karisaka Pass, Saitama Pref., Japan, 1974.8.4, T. Nambu leg. /Kontyu, Vol. 45(1) (1977): p. 29

Alysson monticola 1977 [B1-362317]

PARATYPE ♂. Karisaka Pass, Saitama Pref., Japan, 1974.8.4, T. Nambu leg. /Kontyu, Vol. 45(1) (1977): p. 29

Alysson monticola 1977 [B1-362318]

PARATYPE ♂. Karisaka Pass, Saitama Pref., Japan, 1974.8.4, T. Nambu leg. /Kontyu, Vol. 45(1) (1977): p. 29

Alysson monticola ezoensis 1977 [B1-362319]

PARATYPE ♀. Sapporo (Maruyama), Hokkaido, Japan, 1957.7.10, K. Kamijo leg. /Kontyu, Vol. 45(1) (1977): p. 32

Bembecinus nambui 1973 [B1-362320] (Fig. 3)

HOLOTYPE ♂. Chabana, Is. Yoron, Okinawa Pref., Japan, 1972.8.6, T. Nambu leg. /Etizenia, No. 65 (1973): p. 3

Psenulus ogasawaranus 1984 [B1-362321]

PARATYPE ♀. Chichidzima, Is. Ogasawaras, Tokyo, Japan, 1983.8.9, T. Nambu leg. /Spec. Publ. Jpn. Hymen. Ass., No. 28 (1984): p. 1

Psenulus ogasawaranus 1984 [B1-362322]

PARATYPE ♂. Chichidzima, Is. Ogasawaras, Tokyo, Japan, 1983.8.13, T. Nambu leg. /Spec. Publ. Jpn. Hymen. Ass., No. 28 (1984): p. 1

Cerceris tokunosimana 1973 [B1-362323] (Fig. 4)

HOLOTYPE ♂. Is. Tokunoshima, Kagoshima Pref., Japan, 1972.8.1, T. Nambu leg. /Etizenia, No. 65 (1973): p. 7
Treated as *Cerceris amamiensis tokunosimana* Tsuneki 1973 by Sk. Yamane & Tano (1995).

Symmorphus mizuhonis 1977 [B1-362325]

PARATYPE ♂. Karisaka-koya, Saitama Pref., Japan, 1974.8.3, T. Nambu leg. /Spec. Publ. Jpn. Hymen. Ass., No. 5 (1977): p. 17

Symmorphus mutinensis yezoanus 1977 [B1-362326]

PARATYPE ♂. Sapporo (Fushimi), Hokkaido, Japan, 1958.11, T. Nambu leg. /Spec. Publ. Jpn. Hymen. Ass., No. 5 (1977): p. 16

Currently placed as a synonym of *Symmorphus angustatus* (Zetterstedt 1838) by Cumming (1989).

Smicromyrme fukudai tokunosimana 1973 [B1-362327] (Fig. 5)

HOLOTYPE ♂. Is. Tokunoshima, Kagoshima Pref., Japan, 1972.8.2, T. Nambu leg. /Etizenia, No. 65 (1973): p. 24
Currently placed as a synonym of *Petersenidia fukudai* (Tsuneki 1972) by Lelej & Sk. Yamane (1992).

Trogaspidia fukudai tokunosimana 1972 [B1-362328] (Fig. 6)

HOLOTYPE ♀. Is. Tokunoshima, Kagoshima Pref., Japan, 1972.7.2, T. Nambu leg. /Etizenia, No. 65 (1972): p. 24
Currently placed as a synonym of *Petersenidia fukudai* (Tsuneki 1972) by Lelej & Sk. Yamane (1992).

Tiphia ifri 1985 [B1-362329]

PARATYPE ♂. Ogose, Saitama Pref., Japan, 1974.9.21, T. Nambu leg. /Spec. Publ. Jpn. Hymen. Ass., No. 31 (1985): p. 49

Tiphia ifri 1985 [B1-362330]

PARATYPE ♂. Kodama, Saitama Pref., Japan, 1969.9.12, T. Nambu leg. /Spec. Publ. Jpn. Hymen. Ass., No. 31 (1985): p. 49

Tiphia kisukei 1985 [B1-362331]

PARATYPE ♂. Hokkaido, Japan, 1972.9.18, T. Nambu leg. /Spec. Publ. Jpn. Hymen. Ass., No. 31 (1985): p. 57

Tiphia kisukei 1985 [B1-362332]

PARATYPE ♂. Hokkaido, Japan, 1972.9.18, T. Nambu leg. /Spec. Publ. Jpn. Hymen. Ass., No. 31 (1985): p. 57

Tiphia levisternalis 1985 [B1-362333]

PARATYPE ♂. Sakuma-dam, Shizuoka Pref., Japan, 1971.8.8, T. Nambu leg. /Spec. Publ. Jpn. Hymen. Ass., No. 31 (1985): p. 25

Tiphia levisternalis 1985 [B1-362334]

PARATYPE ♂. Kamioka, Gifu Pref., Japan, 1971.8.5, T. Nambu leg. /Spec. Publ. Jpn. Hymen. Ass., No. 31 (1985): p. 25

Tiphia rufotibiata 1985 [B1-362335]

PARATYPE ♂. Mt. Takakuma, , Japan, 1958.9.13, K. Kamijo leg. /Spec. Publ. Jpn. Hymen. Ass., No. 31 (1985): p. 36

Tiphia rufotibiata 1985 [B1-362336]

PARATYPE ♂. Mt. Takakuma, , Japan, 1958.9.13, K. Kamijo leg. /Spec. Publ. Jpn. Hymen. Ass., No. 31 (1985): p. 36

Tiphia vulgata 1985 [B1-362338]

PARATYPE ♂. Kodama, Saitama Pref., Japan, 1972.9.18, T. Nambu leg. /Spec. Publ. Jpn. Hymen. Ass., No. 31 (1985): p. 39

Tiphia vulgata 1985 [B1-362339]

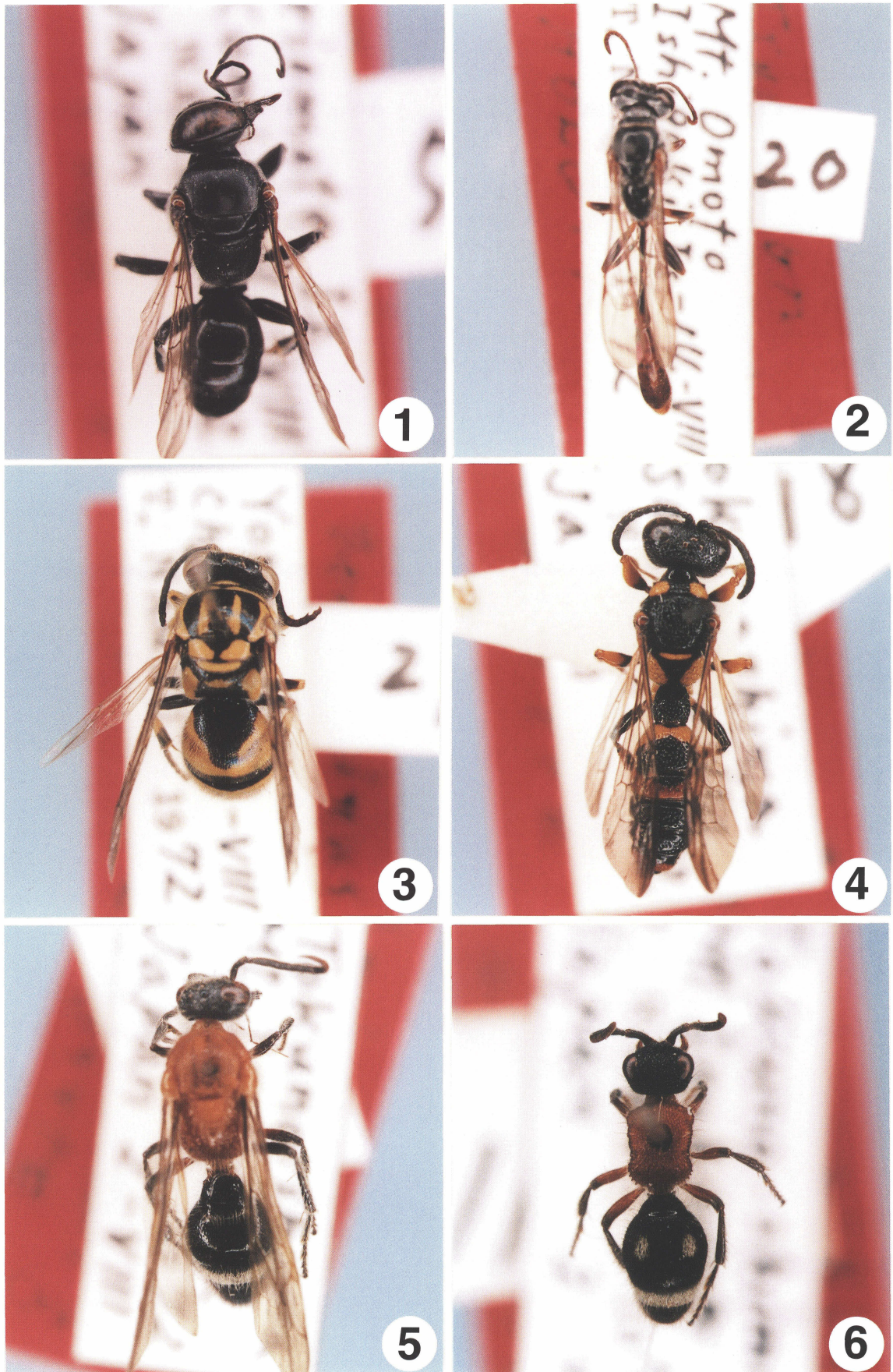
PARATYPE ♀. Kodama, Saitama Pref., Japan, 1972.9.18, T. Nambu leg. /Spec. Publ. Jpn. Hymen. Ass., No. 31 (1985): p. 39

References

- Hashimoto, Y. and A. Nakanishi** (1997) A List of the Type-Specimens of Hymenoptera Described by K. Tsuneki in the Museum of Nature and Human Activities, Hyogo. *Catalogue of Collections in the Museum of Nature and Human Activities, Hyogo*, No. 2: 47 p.+7 plates.
- Lelej, A. and Sk. Yamane** (1992) Interesting velvet ants (Hymenoptera, Mutillidae) from Japan and Korea. *Jpn. J. Ent.*, **60** (3): 625-632.
- Tsuneki, K.** (1952) The genus *Rhopalum* Kirby (1829) of Japan, Korea, Saghalien and the Kuriles, with a suggested reclassification of the subgenera and descriptions of four new species (Hymenoptera, Sphecidae, Crabroninae). *Jour. Fac. Sci., Hokkaido Univ., Ser. VI, Zool.*, **11** (1): 110-125.
- Tsuneki, K.** (1973) New and the first recorded species and subspecies of Sphecidae and Mutillidae from Japan, with taxonomic notes on some species. *Etizenia*, **65**: 1-28.
- Tsuneki, K.** (1977) Two new species of the genus *Alysson* Panzer (Hymenoptera, Sphecidae) in Japan. *Kontyu (Tokyo)*, **45** (1): 26-32.
- Tsuneki, K.** (1977) Supplements to the Giordani Soika's "Symmorphus in Japan" (Hymenoptera, Eumenidae). *Spec. Publ. Jpn. Hymen. Ass.*, **5**: 15-20.
- Tsuneki, K.** (1981) Studies on the genus *Trypoxylon* Latreille of the Oriental and Australian regions (Hymenoptera Sphecidae) X. Revision of the Formosan species. *Spec. Publ. Jpn. Hymen. Ass.*, **15**: 1-56.
- Tsuneki, K.** (1982) Studies on the new material of Sphecidae, Chrysididae and Mutillidae from Formosa and the Southern Ryukyus (Hymenoptera). *Spec. Publ. Jpn. Hymen. Ass.*, **23**: 15-45.
- Tsuneki, K.** (1983) A contribution to the knowledge of Sphecodes Latreille of Japan (Hymenoptera, Halictidae). *Spec. Publ. Jpn. Hymen. Ass.*, **26**: 1-72.
- Tsuneki, K.** (1984) Solitary wasps newly collected in the Ogasawaras or the Bonin Islands (Hymenoptera). *Spec. Publ. Jpn. Hymen. Ass.*, **28**: 1-12.
- Tsuneki, K.** (1985) Taxonomic studies on the Japanese species of the genus *Tiphia* (I) Revision and addition (Hymenoptera, Tiphidae). *Spec. Publ. Jpn. Hymen. Ass.*, **31**: 1-90.

Received: November 17, 1998

Accepted: January 21, 1999



Figs 1-6. Holotype specimens of wasps described by Dr. K. Tsuneki. 1. *Tachysphex nambui*. 2. *Trypoxylon isigakiense*. 3. *Bembecinus nambui*. 4. *Cerceris tokunosimana*. 5. *Smicromyrme fukudai tokunosimana*. 6. *Trogaspidia fukudai tokunosimana*.